



DISPENSING

1. DISPENSING HEAD

The Polare dispensing head is a compact unit specifically designed for accurate dispensing of high viscosity fluids, pastes and offset inks.

Based on a rotating table concept, the dispensing valves are positioned in a single point, enabling the system to dispense into any type of can.

Valves are individually actuated via pneumatic cylinders; the result is in an easy-to-control equipment with reduced maintenance.

The head can handle a maximum of 20 valves.

Viscosity range: from 25.000 to 500.000 CPS.

2. DISPENSING VALVES

The head is supplied with 11x dispensing valves type VO18.2 for high viscosity products, 0,1 gram accuracy.

The valves are operated with two different flows, coarse and small, to achieve a fast and precise dispensing cycle.

Its special shutters design ensures a sharp breakaway of ink drops, leaving the valve's flat nozzle clean after dispensing.

CONTROL

3. SCALE

The dispensing system is equipped with n.1 electronic scale with 32 kg capacity and 0,1 gr. readability.

The scale platform can be positioned at adjustable height to fit the containers of different sizes under valves nozzles.

4. CONTROL CABINET

The control cabinet is integrated into the machine and it is complete of all electrical and pneumatic accessories for the system's automation.

5. PLC INTERFACE

The system automation is managed by a PLC, placed in the control cabinet and interfaced to PC.

6. COMPUTER

DELL OptiPlex 3050MT XCTO I3, 4GB, 128GB SSD, 3YNBD. OS Microsoft Windows® 10 Professional (64Bits).
MONITOR LCD 22"

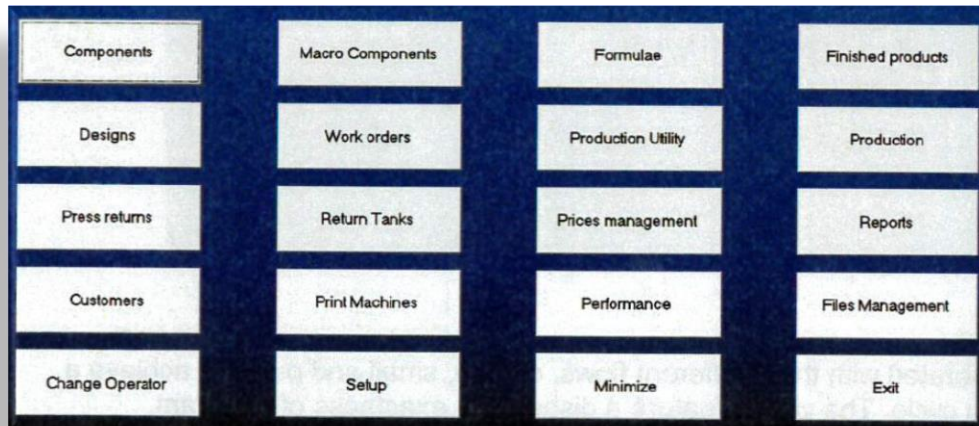


SOFTWARE

7. INKPRO SOFTWARE

Latest available release of Inkpro software, for complete management of all operations related to dispensing. The Software is supplied under license.

Available in over 30 languages.

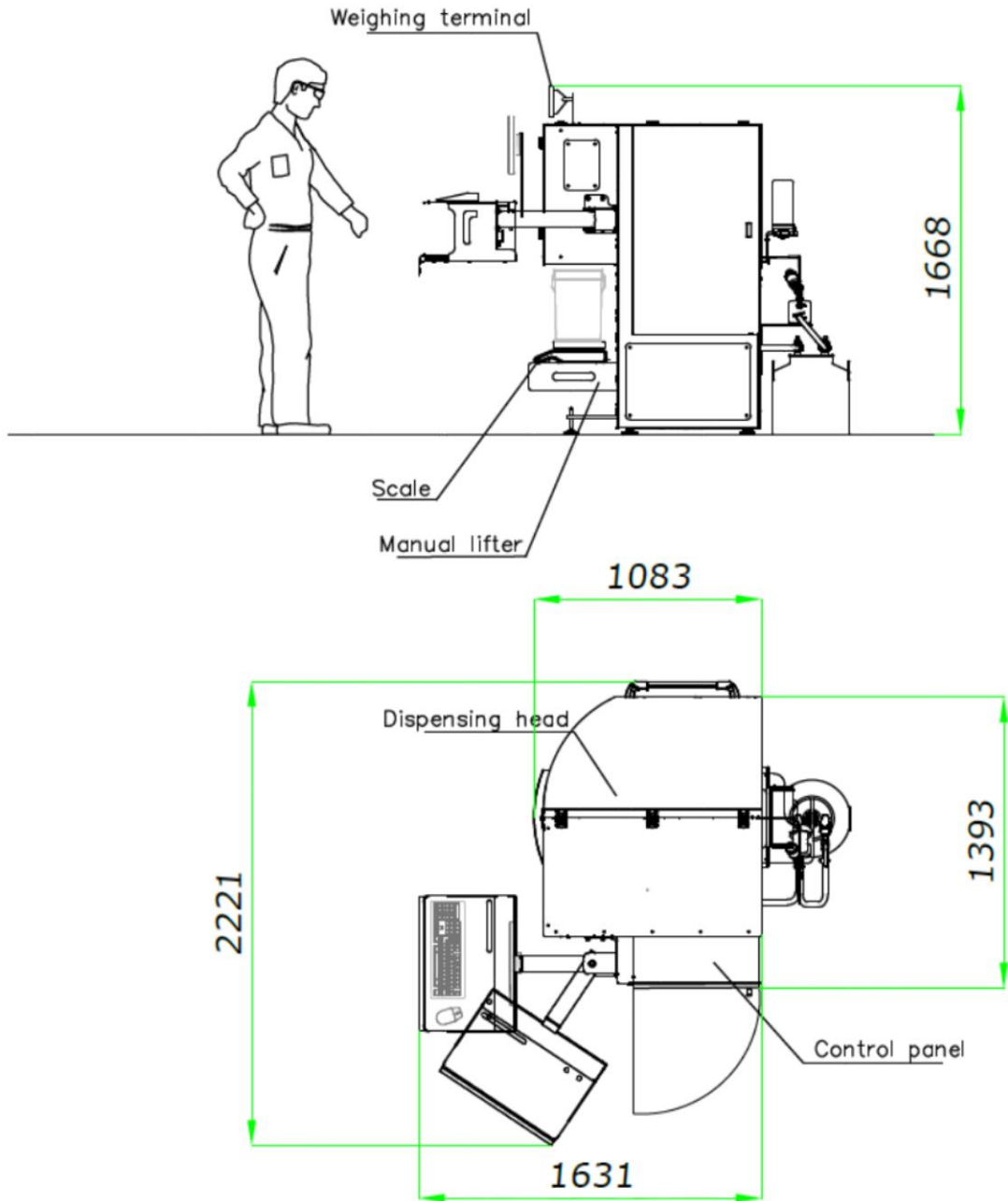


The main options provided in this software package are:

- Components managements with ID, storage type, technical data, colour strength, VOC, and more
- Stock with synoptic view, batch codes traceability, price evaluation.
- Dynamic, self-learning correction of dispensing parameters
- Components daily/weekly automatic recirculation planning
- Formulae management with Insert/Modification/Display/Print options
- Multi formula - to create three different formulations with same code and description
- Press returns database with different reuse options
- Designs management – consumption estimation with surface management
- Work orders management
- Automatic production modes per component, formula, design, work order
- Production planning – for production and dispensing head management
- Extensive reporting/statistics options choice with multi printout modes Interfacing with spectrophotometer and data import/export from and to major ERP systems

8. ON LINE ASSISTANCE

A quick support version of internet-based program TeamViewer is installed for on-line technical assistance. This ensures remote connectivity by our service desk for diagnostic activities or eventual operator's targeted training.



SAMOA Group



Complete installations, maintenance and repair work by our experienced service and assembly team

