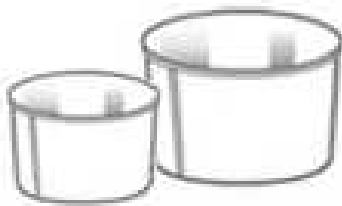


## **BETZ ColorPress**

### **You know the problems!**

- Filling the ink fountains manually, for example with spot colours
- Organising an employee to control the ink level to ensure equal distribution of the ink via a spatula
- Ink leftovers in cans have to be disposed of, because of skin formation

All this can be solved by ...



**Betz ColorPress**  
**Ink can dispensing system BCP**  
with ink level control

....easy.... clean.... reliable.... **Betz Flow**

## **Betz ColorPress BCP**

### **Technical data:**

Compressed air pressure 4 - 8 bar (60 – 120 psi)  
operating range

Operating voltage (automatic system) 24 VDC

### **Manual system:**

Manual positioning of the ink dispensing unit

### **Automatic system:**

Continual monitoring of ink level across the whole width of the ink fountain using ultrasonic sensor with automatic refill to maintain a constant level to improve print quality



**Betz Ink can dispensing system  
ColorPress BCP**



**Betz ColorPress BCP**

The payback is defined over a short period to make your company more effective and profitable.

Automation with enhanced design



## **Betz ColorPress BCP**

### **BCP version with valve adapter assembly** allowing connection to ink feed pipework and ink pumps

This option provides you with the flexibility to supply process inks from 200 kg standard European style circular drums or 300 kg rectangular containers.

With limited modifications to your existing system the supply from process colors is assured simply by replacing the ink can with our adapter valve. This is connected via a high pressure flexible hose to the main ink feed supply pipe work.

The process of filling the ink fountain from the pump supply will replicate the can filling system precisely.



## Betz ColorPress BCP

BCP with ink valve adapter to be connected to a ink pump station with 200 kg drums



BCP system integrated in the press control



### Betz ColorPress BCP



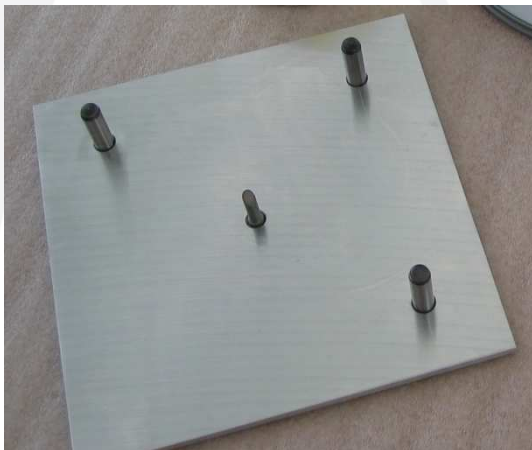
By dispensing with BCP system minimal amount of remaining ink in the cans



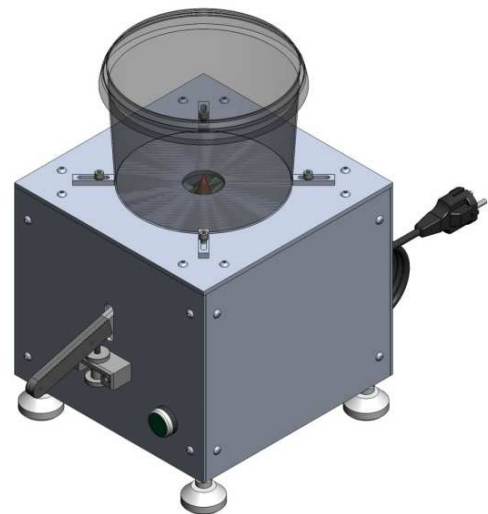
**Betz ColorPress BCP**  
**BCP with ink agitator for UV ink**



**Punching device for Metall Ink can**  
To punch a hole in the bottom of a  
2,5 kg Metall ink can  
Boden der 2,5 kg Metalldose



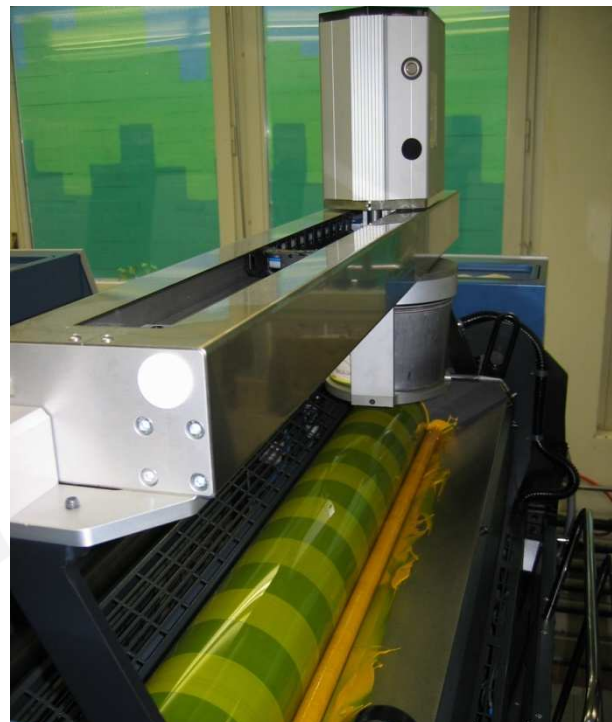
**Melting Ink can punching device**  
to punch a hole in the bottom of a  
2,5 kg ink plastic can



**Betz Ink can dispensing system  
ColorPress BCP**



**Betz ColorPress BCP**





## Betz ColorPress BCP



### Your advantages at a glance:

- ✓ Unique and optimized design
- ✓ Worldwide availability of offset inks in cans
- ✓ Complete emptying of the ink cans, thus easy disposal
- ✓ Partially emptied ink cans can be reused again
- ✓ Adapter for the emptying of all common ink cans available
- ✓ Unique valve adapter to optimize ink supply for process colors using 200kg drum pumping station
- ✓ Adjustable brackets to give free access to ink fountain
- ✓ Ink agitator available as option
- ✓ Maintenance-free system

## **Betz ColorPress BCP**

### **Accessories:**

#### **Ink can punching device:**

to punch an outlet in the bottom of a 2,5 kg metal ink can.

#### **Foil lid:**

After taking the lid off the can, the plastic flexible foil is placed on top of the contents of the can, to prevent the follower plate from making contact with the ink.

With partially emptied cans the flexible foil lid will remain on the surface of the ink within the can to prevent ink skinning.

#### **Can Sealers:**

to seal a partially emptied can for re-use.



**Betz Ink can dispensing system  
ColorPress BCP**



Complete installations, maintenance and repair work by our experienced service- and assembly team



Tel.: +49 (0) 9391 98 26 – 0  
Fax: +49 (0) 9391 98 26 – 50  
info@betz.de  
[www.betz.de](http://www.betz.de)

**Betz Flow GmbH**  
Am Obereicholz 4  
97828 Mar ktcheidenfeld  
Germany

